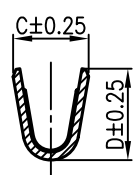
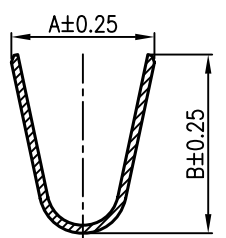
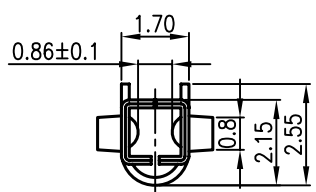


Specifications:
 Current Rating:9.0A AC/DC
 Voltage Rating:600V AC/DC
 Contact Resistance:10m Ohm. Max.
 Insulation Resistance:1000M Ohm. Min.
 Withstanding Voltage:1500V AC/Minute
 Operating Temperature Range:-40°C To +105°C
 Application Wire:Awg 16~28
 Material And Finish:
 Contact:Brass
 Finish:Tin Plated
 How To Order

HST42X-XXXX-XX

- BS:Brass
- PH:Phosphor Bronze
- 16:Apply Wire 16#
- 1824:Apply Wire 18# To 24#
- 2228:Apply Wire 22# To 28#
- Blank:Tin Plated
- G:Gold Plated
- T:Terminal



Part No	Wire Apply	A	B	C	D	Q'ty/Reel
HST42X-16	16AWG	3.6	4.5	2.3	2.7	4,000Pcs
HST42X-1824	18-24AWG	3.6	4.5	1.9	2.3	4,000Pcs
HST42X-2228	22-28AWG	2.3	2.3	1.8	1.65	5,000Pcs

RoHS Compliant

F			
E			
D			
C			
B			
A	01-SEP-2012	(PC0001)	Ken
REV	DATE	FILE	BY

DRAWN: Ken
 CHECKED: Lily Chou
 APPROVAL: Chao Peng

GENERAL TOLERANCE:
 .X=±0.20
 .XX=±0.15
 UNIT: MM
 SCALE: 1:1
 SHEET: 1 / 2
 PROJECTION:

HOYATO 东莞好亚通电子厂
 Connector supplies

DESCRIPTION:
 4.2mm Socket Wire To Housing Terminal

PART NO:
 HST42X-XXXX-XX

SIZE
A4