

1

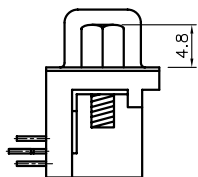
2

3

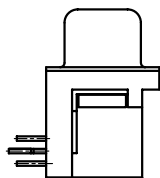
4

5

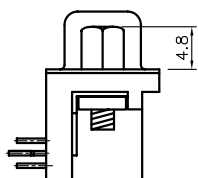
5504F1-XXP-01-XX



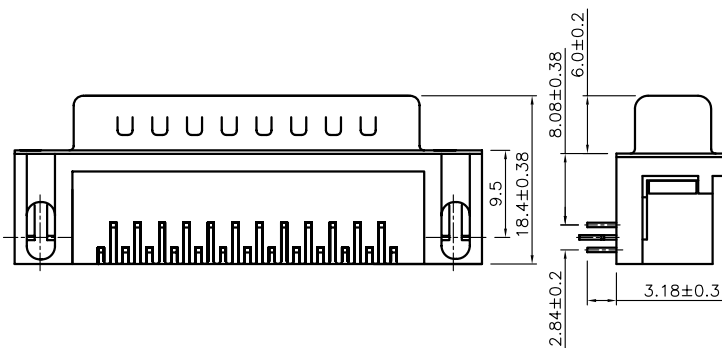
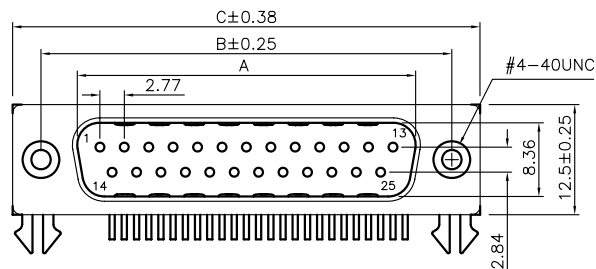
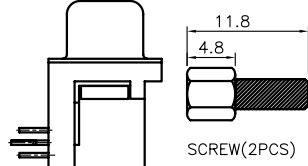
5504F1-XXP-02-XX



5504F1-XXP-02A-XX



5504F1-XXP-02B-XX



Pos	A	B	C
9	16.92	24.99	30.81
15	25.25	33.32	39.14
25	38.96	47.04	53.04
37	55.42	63.50	69.32

Specifications:

Current Rating:3.0A AC,DC

Voltage Rating:250V AC,DC

Temperature Range:-40°C ~ +85°C

Contact Resistance:30mohm max.

Insulation Resistance:5,000Mohm min.

Withstanding Voltage:1,000V AC/Minute

Materials:

Insulator:High Temp. Plastic (UL 94V-0)

Contact:Copper Alloy

Plating:Gold Plated on Contact Area,

Tin Plated on Solder Tail.

Shell:Metal Iron with Nickel plated

How To Order

DBPH1-XXX-XXX

BH:Board Lock/Hex Screw

RL:Rivet W/Board Lock

RLH:Rivet W/Board Lock/Hex Screw

RLB:Rivet W/Board Lock/
Attached Hex Screw

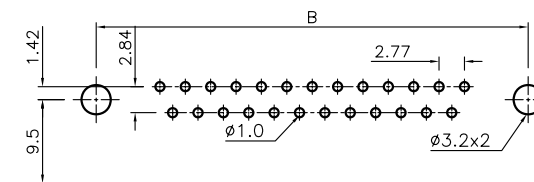
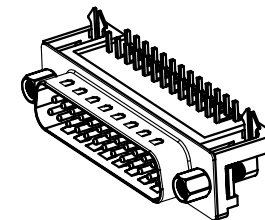
G:Full Gold plated

SG:Selective Gold Plated

No.Of Positions

P:Male

8.08mm Footprint



P.C.B. Layout

RoHS Compliant

DRAWN:

Jack Zhou

GENERAL TOLERANCE:

.X=±0.2

.XX=±0.15

HOYATO
Connector supplies

东莞好亚通电子厂

CHECKED:

Ken Wang

UNIT: MM

DESCRIPTION:

D-SUB Male 8.08mm
Footprint Right Angle Type

SIZE

APPROVAL:

Make Hu

SHEET: 1 / 1

PART NO:

DBH1-XXX-RLH

A4

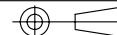
REV

DATE

FILE

BY

PROJECTION:



E

D

C

B

A

A

B

C

D