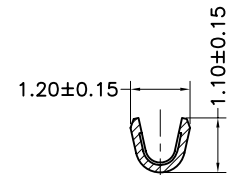
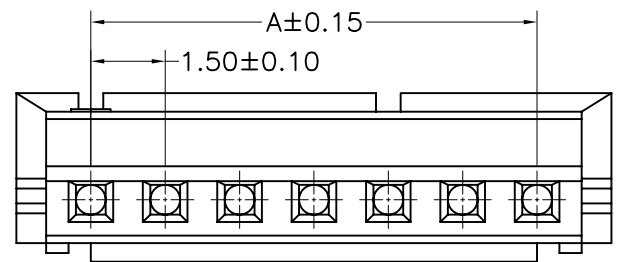
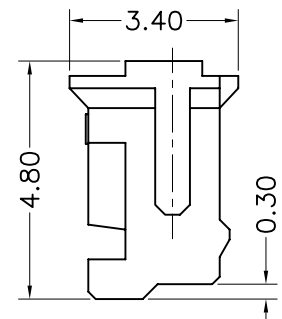
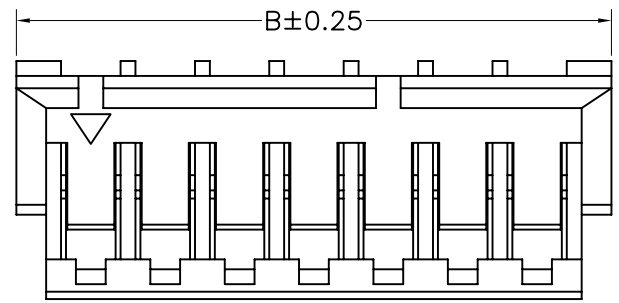


Section:A-A

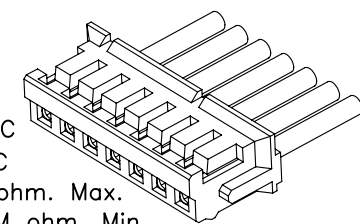


Section:B-B

H15T



H15-XX



Specifications:

Current Rating: 1.0A AC/DC
 Voltage Rating: 50V AC/DC
 Contact Resistance: 40m ohm. Max.
 Insulation Resistance: 100M ohm. Min.
 Withstanding Voltage: 500V AC For One Minute
 Operating Temperature Range: -25°C to +85°C
 Application Wires: AWG #26 TO #30
 Material and Finish
 Insulator: High Temp. Plastic (Nylon 66 UL94V-0)
 Insulator Color: White
 Contact: Phosphor Bronze
 Plating: Tin Plated

How to order

H15T-XX
 └── No. of positions
 H: Housing

Dimension:

Circuits	DIM.A	DIM.B
2	1.50	4.50
3	3.00	6.00
4	4.50	7.50
5	6.00	9.00
6	7.50	10.50
7	9.00	12.00
8	10.50	13.50
9	12.00	15.00
10	13.50	16.50
11	15.00	18.00
12	16.50	19.50
13	18.00	21.00

RoHS Compliant

F				DRAWN: Ken	GENERAL TOLERANCE: .X=±0.20 .XX=±0.15		DESCRIPTION: 1.5mm Socket Housing & Terminal	SIZE A4
E								
D				CHECKED: Lily Chou	UNIT: MM	PART NO: H15-XX & H15T		
C					SCALE: 1:1			
B				APPROVAL: Chao Peng	SHEET: 1 / 1			
A	01-SEP-2012	(H0031)	Ken		PROJECTION:			
REV	DATE	FILE	BY					