

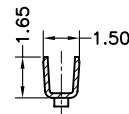
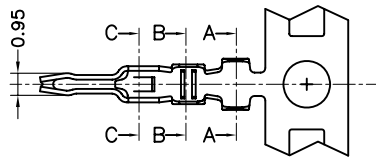
1

2

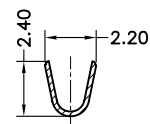
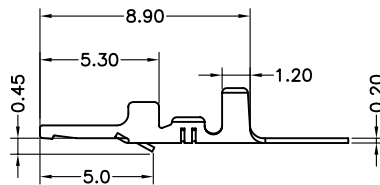
3

4

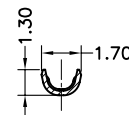
5



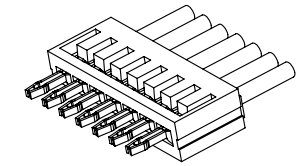
Section:C-C



Section:A-A



Section:B-B



Specification:

Current Rating:2.0A AC/DC

Voltage Rating:125V AC/DC

Contact Resistance:20mohm max.

Insulation Resistance:1000Mohm min.

Withstand Voltage:500V AC/Minute

Operating Temperature Range:-40°C to +85°C

Material and Finish:

Material:High Temp. Plastic (Nylon 66 UL94V-0)

Insulator Color:Black

Contact:Phosphor Bronze

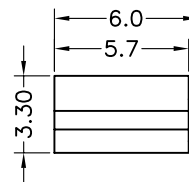
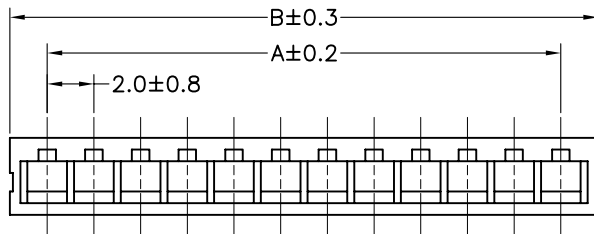
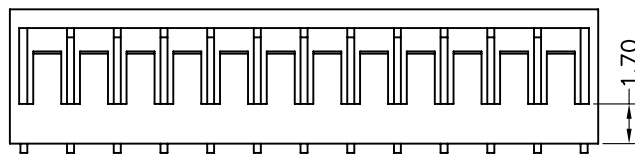
Plating:Gold Plated

Wire Range:AWG #30~#24

How To Order:

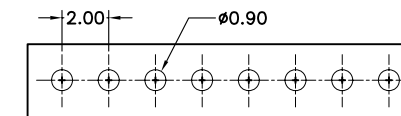
H20-XX

Number of Circuits




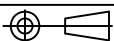
Dimension:

Circuits	DIM.A	DIM.B	Circuits	DIM.A	DIM.B
2	2.00	5.20	10	18.00	21.20
3	4.00	7.20	11	20.00	23.20
4	6.00	9.20	12	22.00	25.20
5	8.00	11.20	13	24.00	27.20
6	10.00	13.20	14	26.00	29.20
7	12.00	15.20	15	28.00	31.20
8	14.00	17.20	16	30.00	33.20
9	16.00	19.20			



PCB Layout

RoHS Compliant

F				DRAWN: Ken	GENERAL TOLERANCE: .X=±0.20 .XX=±0.15	 HOYATO 东莞好亚通电子厂 Connector supplies	DESCRIPTION: 2.0mm Board-in Housing & Terminal	SIZE A4
E								
D				CHECKED: Lily Chou	UNIT: MM	PART NO: H20-XX		
C								SCALE: 1:1
B				APPROVAL: Chao Peng	SHEET: 1 / 1			
A	01-SEP-2013	(PC0001)	Ken			PROJECTION: 		
REV	DATE	FILE	BY					