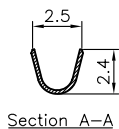
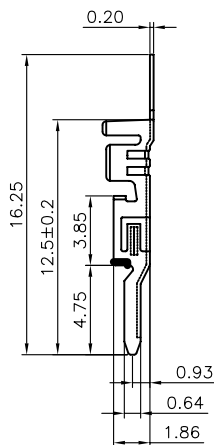
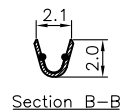


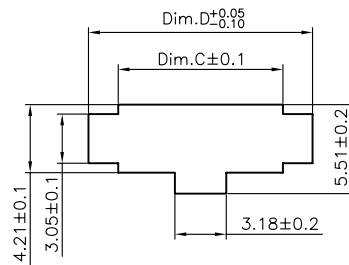
P/N: HPT30T



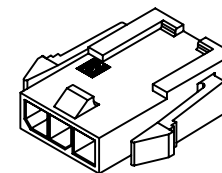
Section A-A



Section B-B



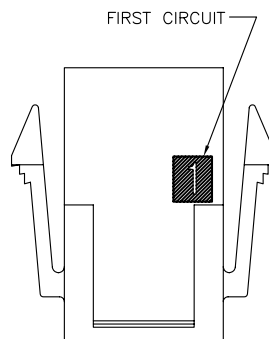
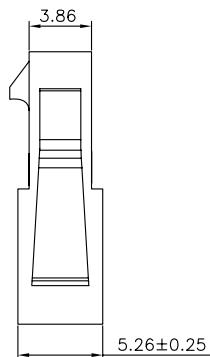
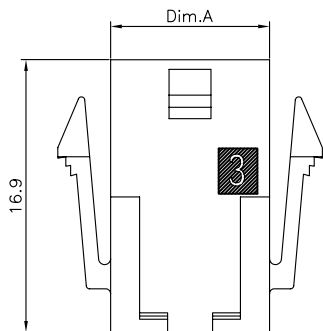
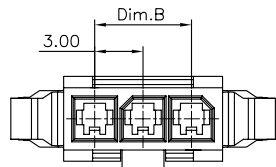
RECOMMENDED PANEL CUT-OUT



Specifications:

Current Rating:5.0A AC/DC
 Voltage Rating:250V AC/DC
 Contact Resistance:10m ohm. Max.
 Insulation Resistance:1000M ohm. Min.
 Withstanding Voltage:1.500V AC/Minute
 Operating Temperature Range:-40°C~+85°C
 Material and Finish
 Insulator:Nylon66 UL94V-0
 Insulator Color: Black
 Contact:Phosphor Bronze
 Plating: Tin Plated
 Mating With:HPDT30T terminal
 How To Order
 HPA30-XX

└─ No. Of Positions



DIMENSION INFORMATION

POSITION	DIM. A	DIM. B	DIM. C	DIM. D
2	6.85	N/A	7.21	10.90
3	9.85	6.00	10.21	13.89
4	12.85	9.00	13.21	16.89
5	15.85	12.00	16.21	19.89
6	18.85	15.00	19.21	22.89
7	21.85	18.00	22.20	25.88
8	24.85	21.00	25.20	28.88
9	27.85	24.00	28.20	31.88
10	30.85	27.00	31.22	34.87
11	33.85	30.00	34.22	37.87
12	36.85	33.00	37.22	40.87

RoHS Compliant

F				
E				
D				
C				
B				
A	01-SEP-2012	(PC0001)	Ken	
REV	DATE	FILE	BY	

DRAWN: Ken	GENERAL TOLERANCE: .X=±0.20 .XX=±0.15
CHECKED: Lily Chou	UNIT: MM SCALE: 1:1
APPROVAL: Chao Peng	SHEET: 1 / 2 PROJECTION:



DESCRIPTION: 3.0mm Power Single Plug Housing & Terminal	SIZE A4
PART NO: HPA30-XX & HPT30T	