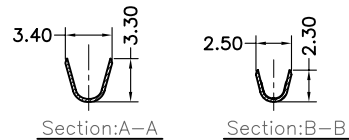
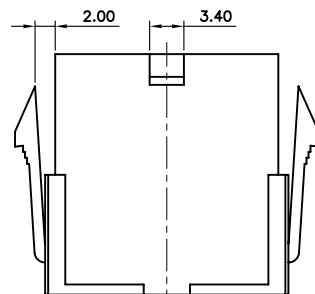
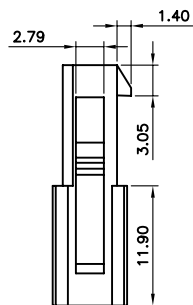
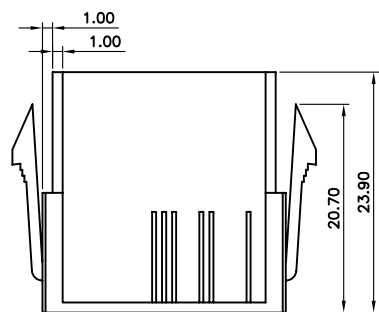
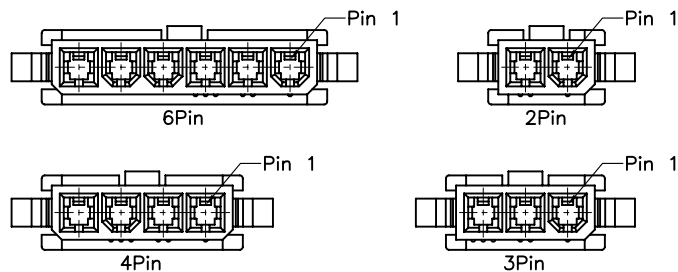
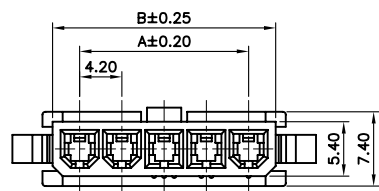


2259T-1622-BS



2259T-2426-BS

2259T-XXXX-XX



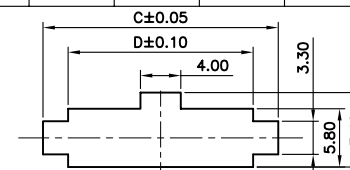
Specifications:

Current Rating:9.0A AC/DC  
 Voltage Rating:600V AC/DC  
 Contact Resistance:10m Ohm. Max.  
 Insulation Resistance:1000M Ohm. Min.  
 Withstanding Voltage:1500V AC/Minute  
 Operating Temperature Range:-40°C To +105°C  
 Application Wire:Awg 16~28  
 Material And Finish:  
 Insulator:Nylon 66 (UL94V-2)  
 Insulator Color:Transparent White  
 Contact:Brass  
 Finish:Tin Plated  
 How To Order  
 HPA42-XX-XX

Blank V2 Material  
 V0:V0 Material(Color:White)  
 No. Of Positions

Dimension:

Pos	Dim.A	Dim.B	Dim.C	Dim.D
02	4.2	9.6	15.0	10.0
03	8.4	13.8	19.2	14.2
04	12.6	18.0	23.4	18.4
05	16.8	22.2	27.6	22.6
06	21.0	26.4	31.8	26.8



Recommended Panel Hole Dimension

Thickness:0.8~2.0

RoHS Compliant

F				
E				
D				
C				
B				
A	01-SEP-2017	(PC0001)	Ken	
REV	DATE	FILE	BY	

DRAWN: Ken	GENERAL TOLERANCE: .X=±0.20 .XX=±0.15
CHECKED: Lily Chou	UNIT: MM
APPROVAL: Chao Peng	SCALE: 1:1
	SHEET: 1 / 2
	PROJECTION:

DESCRIPTION: 4.2mm Plug Wire To Housing Single Row	SIZE
PART NO: HPA42-XX-XX	<b>A4</b>