

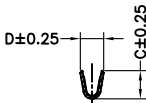
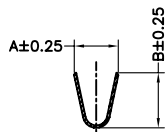
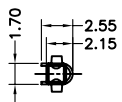
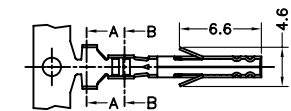
1

2

3

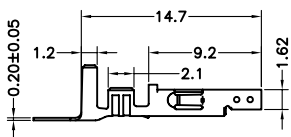
4

5



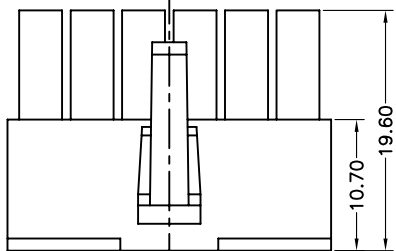
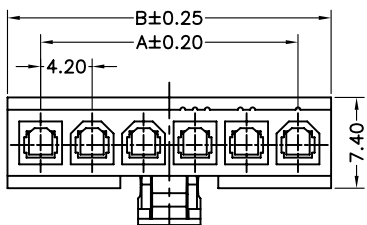
Section:A-A

Section:B-B

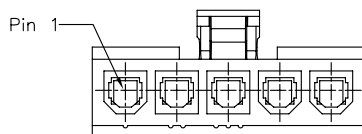
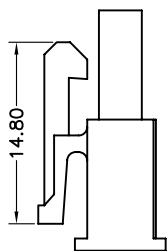


Part No	Wire Application	A	B	C	D
2257T-16-XX	16Awg	3.6	4.5	2.3	2.7
2257T-1824-XX	18~24Awg	3.6	4.5	1.9	2.3
2257T-2228-XX	22~28Awg	2.3	2.3	1.8	1.65

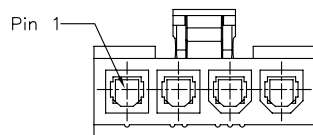
2257T-XXXX-XX



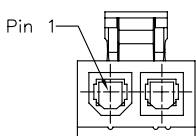
02P&amp;04~06P



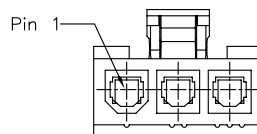
5Pin



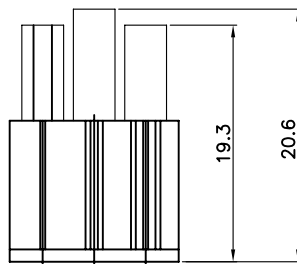
4Pin



2Pin



3Pin



Dimension:

Circuits	DIM.A	DIM.B
2	4.20	9.60
3	8.40	13.80
4	12.60	18.00
5	16.80	22.20
6	21.00	24.60

Specifications:

Current Rating:9.0A AC/DC

Voltage Rating:600V AC/DC

Contact Resistance:10M Ohm. Max.

Insulation Resistance:1,000M Ohm. Min.

Withstanding Voltage:1500V AC/Minute

Operating Temperature Range:-40°C ~ +105°C

Application Wire:Awg 16~22

Material And Finish:

Insulator:Nylon 66 (UL94V-2)

Color:Transparent White

Contact:Brass

Finish:Tin Plated

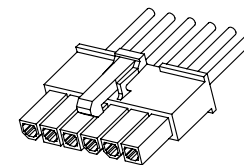
How To Order

HSA42-XX-XX

Blank :White

BK:Black

No. of Positions



F				DRAWN:	GENERAL TOLERANCE:		DESCRIPTION: 4.2mm Mini Fit Single Row Female Housing & Terminal	SIZE <b>A4</b>
E				Ken	.X=±0.20 .XX=±0.15			
D				CHECKED:	UNIT: MM			
C				Lily Chou	SCALE: 1:2			
B				APPROVAL:	SHEET: 1 / 2			
A	01-SEP-2009	(H0001)	Ken	Chao Peng	PROJECTION:	PART NO:	HSA42-XX-XX	
REV	DATE	FILE	BY					

DRAWN:  
Ken

CHECKED:  
Lily Chou

APPROVAL:  
Chao Peng

GENERAL TOLERANCE:  
.X=±0.20  
.XX=±0.15

UNIT: MM

SCALE: 1:2

SHEET: 1 / 2

PROJECTION:



DESCRIPTION: 4.2mm Mini Fit  
Single Row Female Housing & Terminal

PART NO: HSA42-XX-XX

SIZE

**A4**