

1

2

3

4

5

A

B

C

D

Specifications:

Current Rating:2.0A AC/DC

Voltage Rating:250V AC/DC

Contact Resistance:20m ohm. Max.

Insulation Resistance:1000M ohm. Min.

Withstanding Voltage:500V AC For One Minute

Operating Temperature Range:-40° To+105°

Material and Finish

Insulator:High Temp. Plastic (UL94V-0)

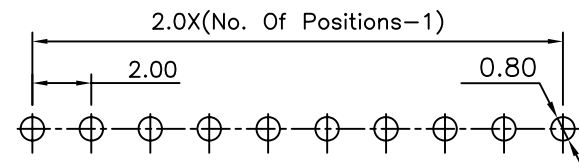
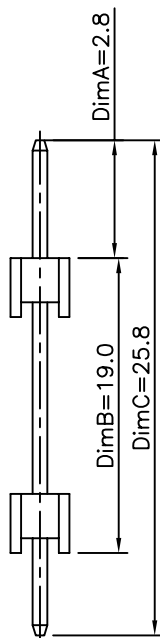
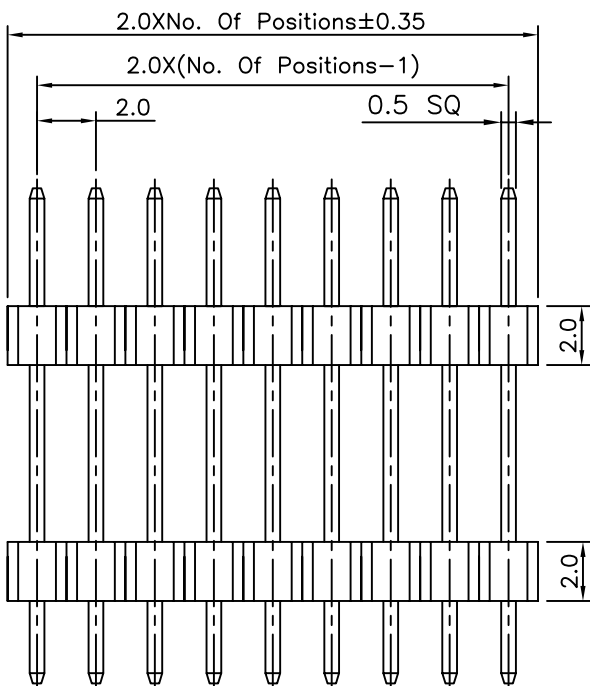
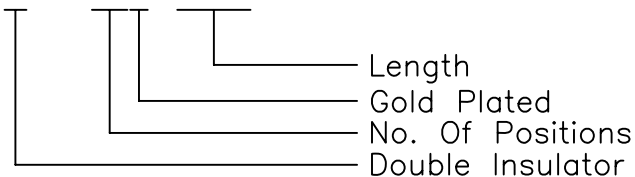
Insulator Color:Black

Contact:Copper Alloy

Plated:Gold Plated

How To Order

PHI20-XXG-2800



PCB Layout

RoHS Compliant

E				DRAWN: Lily Chou	GENERAL TOLERANCE: .X=±0.2 .XX=±0.15		DESCRIPTION: 2.0mm Pin Header Double Insulator Type	SIZE <b>A4</b>
D				CHECKED: Ken Wang	UNIT: MM SCALE:2:1			
C				APPROVAL: Chao Peng	SHEET: 1 / 1	PART NO: PHI20-XXG-2800		
B					PROJECTION:			
A	27-Oct-2015	(YL01)	Lily Chou					
REV	DATE	FILE	BY					