

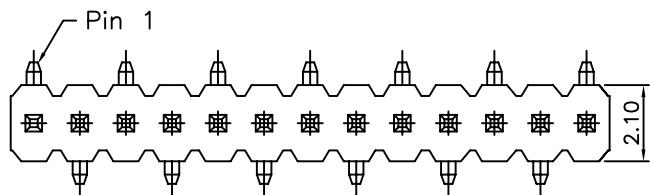
1

2

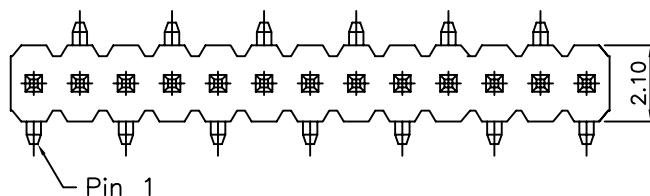
3

4

5



← B2 Type



← B1 Type

Specifications:

Current Rating:1.0 Amps

Voltage Rating:50V AC/DC

Contact Resistance:20mohm max.

Insulation Resistance:1,000M ohm min.

Withstanding Voltage:500V For One Minute

Operating Temperature:-25°C ~ +105°C

Material

Insulator:High Temp.Plastic(Nylon 6T UL94V-0)

Standard Color:Black

Contact:Copper Alloy

Plating:Gold Plated

How To Order

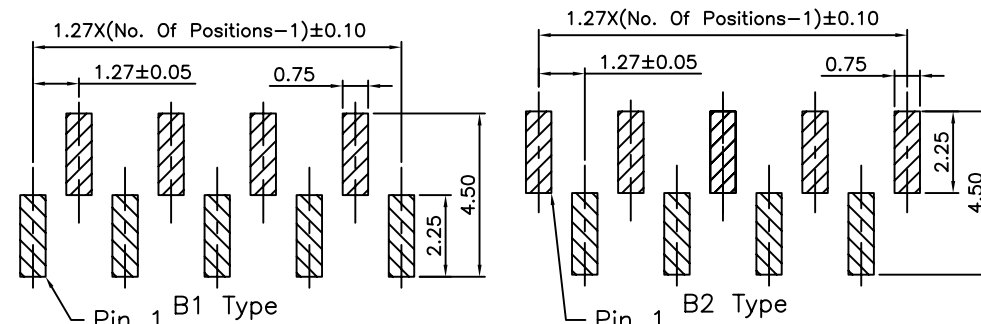
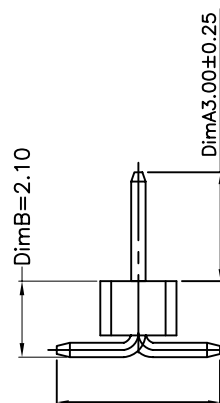
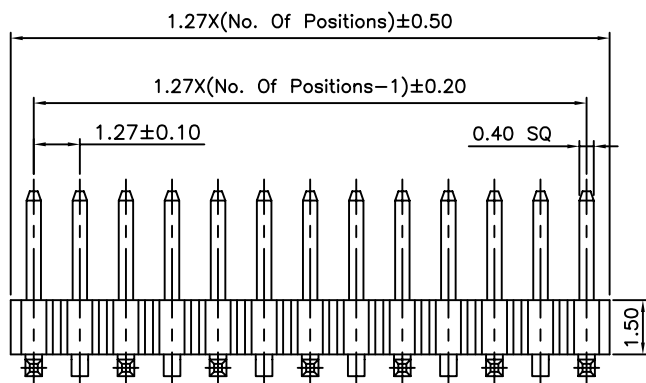
PHSM127-XXG-BX-3021

Length

G:Gold Plated


No. of Positions

SMT Type



Recommended PCB Layout

RoHS Compliant

F				DRAWN:	GENERAL TOLERANCE:		SIZE
E			Ken	.X=±0.20 .XX=±0.15	DESCRIPTION:		
D			CHECKED:	UNIT: MM		1.27mm Pin Header SMT Type	D
C			Lily Chou	SCALE: 1:1	PART NO:		
B			APPROVAL:	SHEET: 1 / 1			
A	08-May-2017	(PC0001)	Ken	Chao Peng	PROJECTION:		
REV	DATE	FILE	BY				