

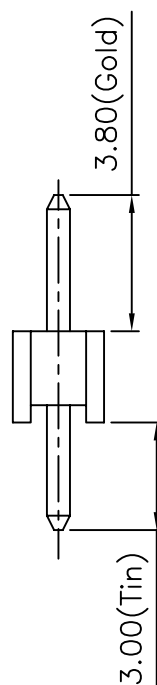
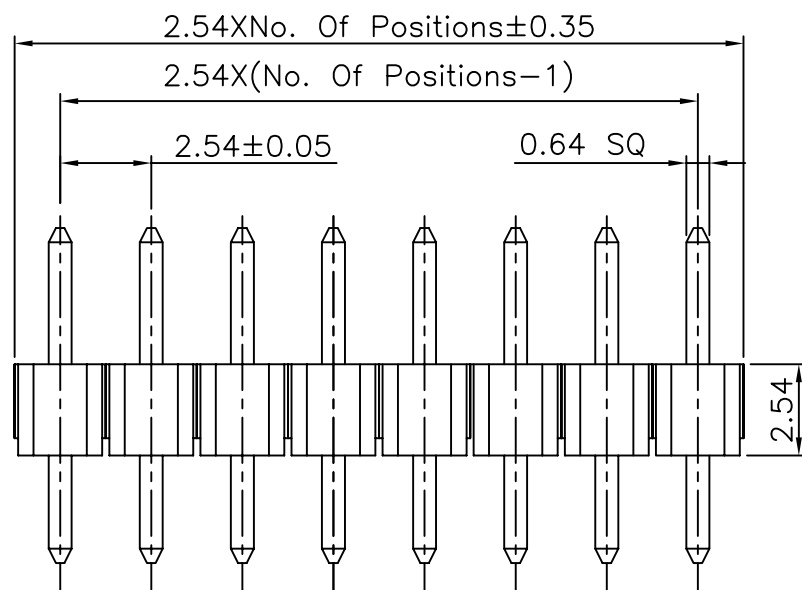
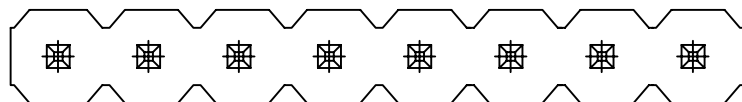
1

2

3

4

5



## Specifications

Current Rating:3.0A AC/DC

Voltage Rating:250V AC/DC

Contact Resistance:20m ohm. Max.

Insulation Resistance:1,000M ohm. Min.

Withstanding Voltage:600V AC For One Minute

Operating Temperature Range:-40°C To +105°C

Material and Plated

Insulator:High Temp. Plastic(Nylon 6T UL94V-0)

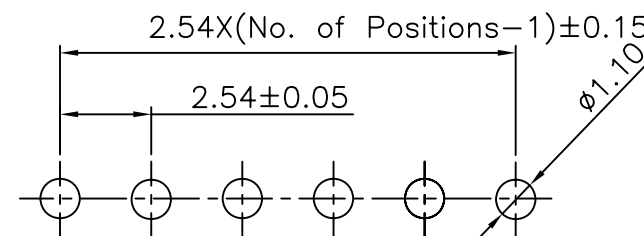
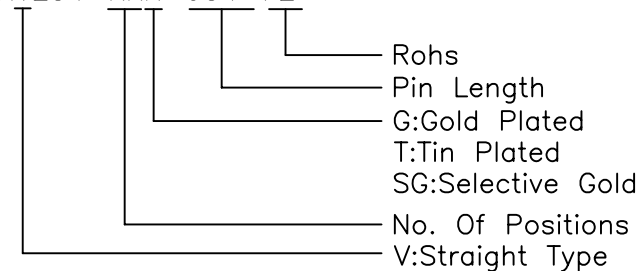
Insulator Color:Black

Contact:Copper Alloy

Plated:Gold Plated

How To Order

PHV254-XXX-934-F2



PCB Layout

RoHS Compliant

F				DRAWN:	GENERAL TOLERANCE:		DESCRIPTION: 2.54mm Pin Header Single Row Straight Type	SIZE <b>A4</b>
E			Ken	.X=±0.20 .XX=±0.15				
D			CHECKED:	UNIT: MM				
C			Lily Chou	SCALE: 1:1				
B			APPROVAL:	SHEET: 1 / 1	PART NO:	PHV254-XXX-934-F2		
A	26-Sep-2022	(PC0001)	Ken	Chao Peng	PROJECTION:			
REV	DATE	FILE	BY					