

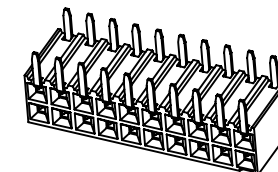
1

2

3

4

5



Specifications:

Current Rating:3.0A AC/DC

Voltage Rating:250V AC/DC

Contact Resistance:20m Ohm.Max.

Insulation Resistance:1,000M Ohm.Min.

Withstanding Voltage:600V AC/Minute

Operating Temperature Range:-40°C To +105°C

Material and Finish:

Insulator: High Temp.Plastic(LCP UL94V-0)

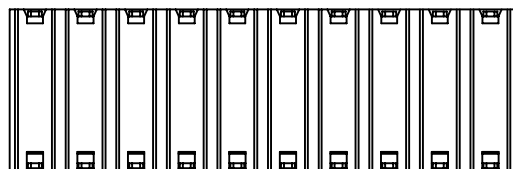
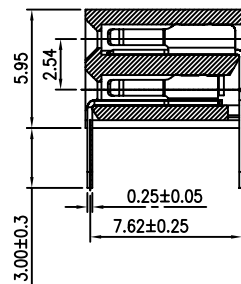
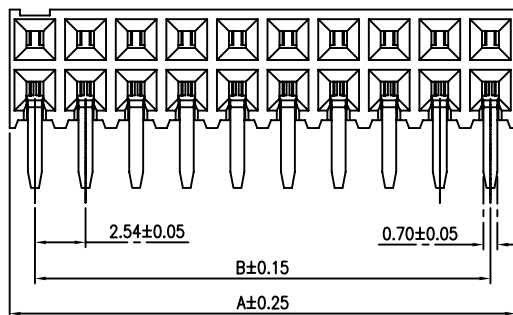
Insulator Color:Black

Contact: copper Alloy

Plating: Gold Plated

How To Order:

PSDBR254-XXX



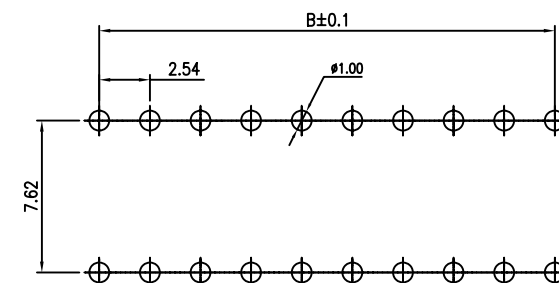
G:Gold Plated

T:Tin Plated

No. Of Contact

DBR:Double Row Dip Type

Poles	DIM:(mm)		Poles	DIM:(mm)		Poles	DIM:(mm)		Poles	DIM:(mm)	
	A	B		A	B		A	B		A	B
4	5.08	2.54	24	30.48	27.94	44	55.88	53.34	64	81.28	78.74
6	7.62	5.08	26	33.02	30.48	46	58.42	55.88	66	83.82	81.28
8	10.16	7.62	28	35.56	33.02	48	60.96	58.42	68	86.36	83.82
10	12.70	10.16	30	38.10	35.56	50	63.50	60.96	70	88.90	86.36
12	15.24	12.70	32	40.64	38.10	52	66.04	63.50	72	91.44	88.90
14	17.78	15.24	34	43.18	40.64	54	68.58	66.04	74	93.98	91.44
16	20.32	17.78	36	45.72	43.18	56	71.12	68.58	76	96.52	93.98
18	22.86	20.32	38	48.26	45.72	58	73.66	71.12	78	99.06	96.52
20	25.40	22.86	40	50.80	48.26	60	76.20	73.66	80	101.6	99.06
22	27.94	25.40	42	53.34	50.80	62	78.74	76.20			



PCB Layout

RoHS Compliant

F			
E			
D			
C			
B			
A	01-SEP-2015	(PC0001)	Ken
REV	DATE	FILE	BY

DRAWN:
Ken

CHECKED:
Lily Chou

APPROVAL:
Chao Peng

GENERAL TOLERANCE:

.X=±0.20

.XX=±0.15

UNIT: MM

SCALE: 1:1

SHEET: 1 / 1

PROJECTION:


HOYATO
Connector supplies

DESCRIPTION:

 2.54mm PCB Socket
Horizontal Entry R/A Dip Type

PART NO:

PSDBR254-XXX

SIZE

A4