

Specifications

Current Rating:7.0A AC/DC  
 Voltage Rating:250V AC/DC  
 Contact Resistance:20m ohm. Max.  
 Insulation Resistance:1,000M ohm. min.  
 Withstanding Voltage:1,500V AC For One Minute  
 Operating Temperature Range:-40°C ~ +105°C

Materials And Finish

Insulator:Nylon 66 (UL94V-0)

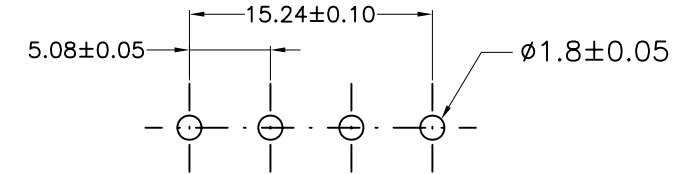
Contact:Brass

Plating:Tin Plated

How To Order

WF1V508-04

No.of Positions  
 V: Straight



P.C.B Layout

RoHS Compliant

F				DRAWN:	GENERAL TOLERANCE:			SIZE
E				Ken	.X=±0.20 .XX=±0.15			
D				CHECKED:	UNIT: MM	DESCRIPTION:		A4
C				Lily Chou	SCALE: 1:1			
B				APPROVAL:	SHEET: 1 / 1	PART NO:		WF1V508-04
A	22-May-2014	(PC0001)	Ken	Chao Peng	PROJECTION:			
REV	DATE	FILE	BY					