

Circuits	Dimension		Circuits	Dimension	
	A	B		A	B
2	6.7	—	14	24.7	18.0
4	9.7	3.0	16	27.7	21.0
6	12.7	6.0	18	30.7	24.0
8	15.7	9.0	20	33.7	27.0
10	18.7	12.0	22	36.7	30.0
12	21.7	15.0	24	39.7	33.0

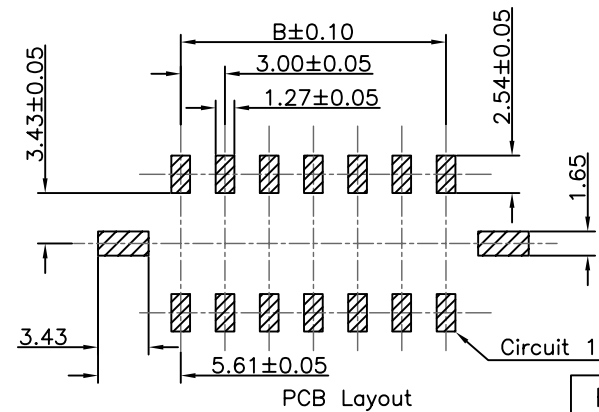
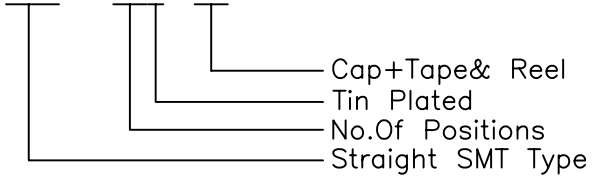
Specifications:

Current Rating:5.0A AC/DC  
 Voltage Rating:250V AC/DC  
 Contact Resistance:10m ohm. Max.  
 Insulation Resistance:1000M ohm. Min.  
 Withstanding Voltage:AC 1500V AC/minute  
 Operating Temperature Range:-25°C ~ +105°C  
 Material and Finish

Insulator:High Temp. Plastic (Nylon 9T UL94V-0)  
 Insularot Color:Black  
 Contact:Copper Alloy  
 Finish:Tin Plated

How to Order

WF1VSM30-XXT-CR



RoHS Compliant

F			
E			
D			
C			
B			
A	26-Mar-2019	(H0049A)	Ken
REV	DATE	FILE	BY

DRAWN: Ken  
 CHECKED: Lily Chou  
 APPROVAL: Chao Peng

GENERAL TOLERANCE:  
 .X=±0.20  
 .XX=±0.15  
 UNIT: MM  
 SCALE: 1:1  
 SHEET: 1 / 2  
 PROJECTION:



DESCRIPTION:  
 3.0mm Power Wafer Straight SMT Type  
 PART NO: WF1VSM30-XXT-CR

SIZE  
**A4**