

Circuits	Dimension		Circuits	Dimension	
	A	B		A	B
2	6.7	—	14	24.7	18.0
4	9.7	3.0	16	27.7	21.0
6	12.7	6.0	18	30.7	24.0
8	15.7	9.0	20	33.7	27.0
10	18.7	12.0	22	36.7	30.0
12	21.7	15.0	24	39.7	33.0

Specifications:

Current Rating:5.0A AC/DC

Voltage Rating:250V AC/DC

Contact Resistance:10m ohm. Max.

Insulation Resistance:1000M ohm. Min.

Withstanding Voltage:AC 1500V AC/minute

Operating Temperature Range:-25°C ~ +105°C

Material and Finish

Insulator:High Temp. Plastic (Nylon 9T UL94V-0)

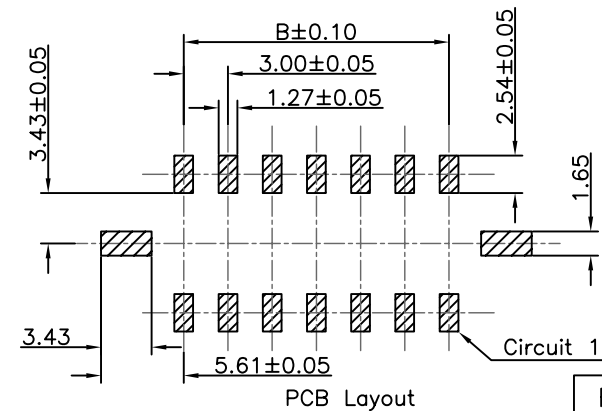
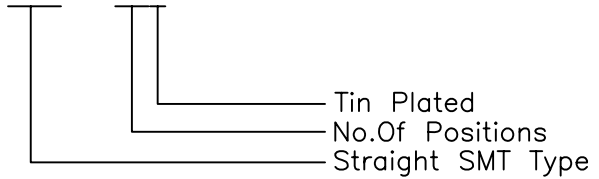
Insulator Color:Black

Contact:Copper Alloy

Finish:Tin Plated

How to Order

WF1VSM30-XXT



RoHS Compliant

F			
E			
D			
C			
B			
A	01-Nov-2017	(H0049A)	Ken
REV	DATE	FILE	BY

DRAWN: Ken	GENERAL TOLERANCE: .X=±0.20 .XX=±0.15
CHECKED: Lily Chou	UNIT: MM
APPROVAL: Chao Peng	SCALE: 1:1
	SHEET: 1 / 2
	PROJECTION:

		DESCRIPTION:	SIZE
		3.0mm Power Wafer Straight SMT Type	
PART NO:		WF1VSM30-XXT	A4