

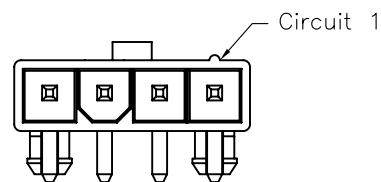
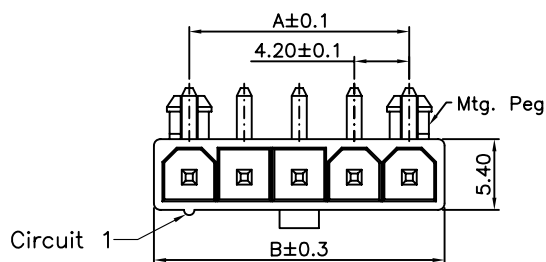
1

2

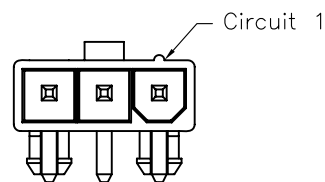
3

4

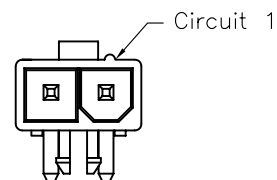
5



4Pin



3Pin

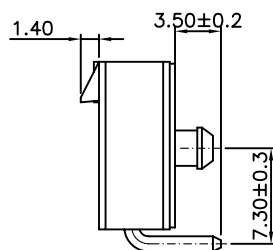
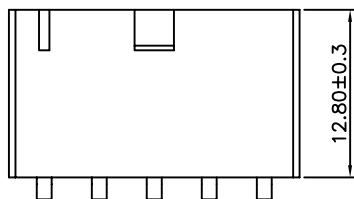


2Pin

## Specifications:

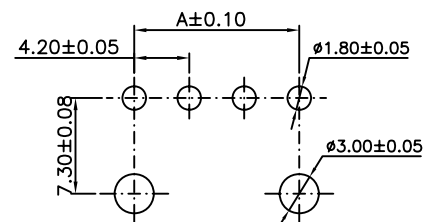
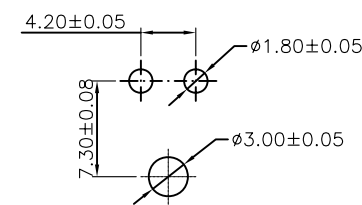
Current Rating:9.0A AC/DC  
 Voltage Rating:600V AC/DC  
 Contact Resistance:10m Ohm. Max.  
 Insulation Resistance:1,000M Ohm. Min.  
 Withstanding Voltage:1,500V AC For One Minute  
 Operating Temperature Range:-40°C ~ +105°C  
 Materials And Finish  
 Insulator:Nylon66 (UL94V-2)  
 Insulator Color:White  
 Contact:Copper Alloy  
 Plated:Tin Plated  
 How To Order  
 WFRA42-XX-PG-01

Without Ear  
 With Post  
 No. of Positions  
 RA:R/A&Single Row



## Dimension Information:

Pos	Dim. A	Dim. B	Pos	Dim. A	Dim. B
02	4.20	9.60	04	12.60	18.00
03	8.40	13.80	05	16.80	22.20

Recommended P.C.B. Layout  
(3P~6P)Recommended P.C.B. Layout  
(2P)

RoHS Compliant

F				DRAWN:	Ken
E				CHECKED:	Lily Chou
D				APPROVAL:	Chao Peng
C					
B					
A	01-SEP-2013	(PC0001)	Ken		
REV	DATE	FILE	BY		

DRAWN:  
Ken

CHECKED:  
Lily Chou

APPROVAL:  
Chao Peng

GENERAL TOLERANCE:  
 .X=±0.20  
 .XX=±0.15

UNIT: MM  
 SCALE: 1:1  
 SHEET: 1 / 2  
 PROJECTION:



DESCRIPTION:  
4.2mm Power Wafer R/A Type

PART NO:  
WFRA42-XX-PG-01

SIZE

**A4**