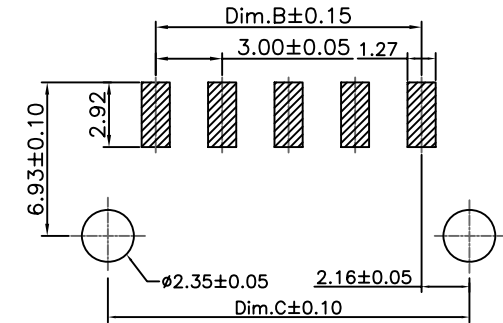


Specifications:
 Current rating:5.0Amps
 Voltage rating:250V AC,DC
 Contact resistance:10mohm Max
 Insulation resistance:1,000Mohm min.
 Withstanding voltage:1,500V AC;DC
 Operating Temperature range:-25°C ~ +105°C
 Materials:
 Insulator:High Temp.Plastic(Nylon 46 UL94V-0)
 Color:Black
 Contact:Copper Alloy
 Plating:Tin Plated
 How to order
 WFRASM30-XXT

T: Tin Plated
 No. of Positions
 SMD Type
 RA: R/A Single row

Positions	Dimension			Positions	Dimension		
	A	B	C		A	B	C
2	9.65	3.00	7.30	8	27.65	21.00	25.30
3	12.65	6.00	10.30	9	30.65	24.00	28.30
4	15.65	9.00	13.30	10	33.65	27.00	31.30
5	18.65	12.00	16.30	11	36.65	30.00	34.30
6	21.65	15.00	19.30	12	39.65	33.00	37.30
7	24.65	18.00	22.30				



PCB LAYOUT

RoHS Compliant

F				DRAWN:	GENERAL TOLERANCE:		DESCRIPTION: 3.0mm Wafer Single Row R/A SMT Type	SIZE A4
E				Ken	.X=±0.20 .XX=±0.15			
D				CHECKED:	UNIT: MM			
C				Lily Chou	SCALE: 1:1			
B				APPROVAL:	SHEET: 1 / 2	PART NO:	WFRASM30-XXT	
A	01-SEP-2009	(PC0001)	Ken	Chao Peng	PROJECTION:			
REV	DATE	FILE	BY					