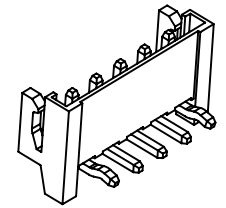


Dimension:

POS.	Dim.A	Dim.B	POS.	Dim.A	Dim.B
2	2.50	7.50	9	20.00	25.00
3	5.00	10.00	10	22.50	27.50
4	7.50	12.50	11	25.00	30.00
5	10.00	15.00	12	27.50	32.50
6	12.50	17.50	13	30.00	35.00
7	15.00	20.00	14	32.50	37.50
8	17.50	22.50	15	35.00	40.00

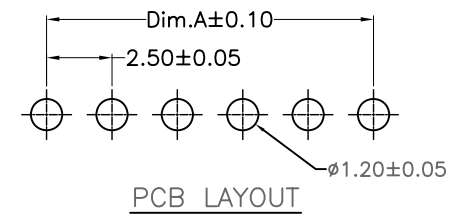


Specifications:

Current Rating:3.0A AC,DC
 Voltage Rating:250V AC,DC
 Contact Resistance:20mohm Max
 Insulation Resistance:1000Mohm Min.
 Withstanding Voltage:1000V AC/minute
 Operating Temperature Range:-40°C~+85°C
 Material And Finish:
 Insulator:High Temp. Plastic(Nylon 66 UL94V-0)
 Insulator Color:White
 Contact:Brass
 Plating:Tin Plated

How to Order
 WFREH-XX

No.of Contacts
 Straight Type



RoHS Compliant

F				DRAWN: Ken	GENERAL TOLERANCE: .X=±0.20 .XX=±0.15		DESCRIPTION: 2.5mm Wafer R/A Type	SIZE A4
E								
D				CHECKED: Lily Chou	UNIT: MM	PART NO: WFVEH25-XX		
C					SCALE: 1:1			
B				APPROVAL: Chao Peng	SHEET: 1 / 1			
A	15-SEP-2017	(PC0001)	Ken		PROJECTION:			
REV	DATE	FILE	BY					