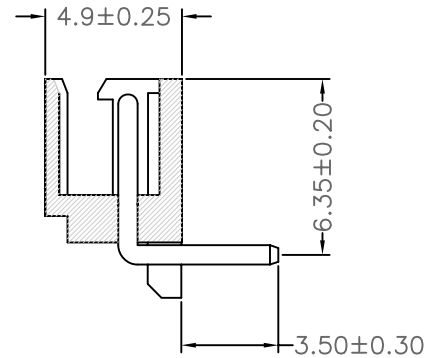
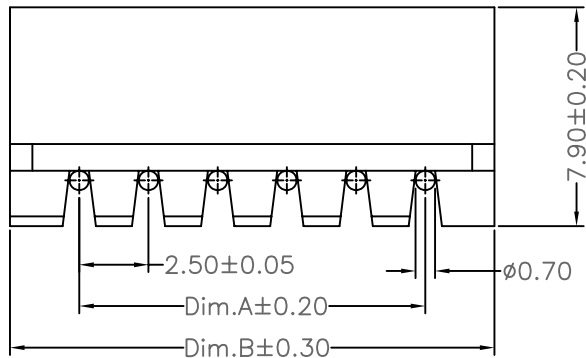


Specifications:
 Current Rating:3.0A AC,DC
 Voltage Rating:250V AC,DC
 Contact Resistance:20mohm Max
 Insulation Resistance:1000Mohm Min.
 Withstanding Voltage:1000V AC/minute
 Operating Temperature Range:-40°C~+85°C

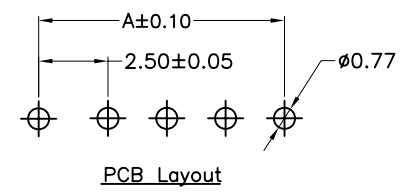
Material And Finish:
 Insulator:Nylon 66 UL94V-0
 Insulator Color:Beige
 Contact:Brass
 Plated:Tin Plated

How To Order:
 WFRM25-XX
 No. Of Contacts
 RM:R/A Type



Dimension:

Circuits	Dim.A	Dim.B	Circuits	Dim.A	Dim.B	Circuits	Dim.A	Dim.B
2	2.50	7.50	8	17.50	22.50	14	32.50	37.50
3	5.00	10.00	9	20.00	25.00	15	35.00	40.00
4	7.50	12.50	10	22.50	27.50	16	37.50	42.50
5	10.00	15.00	11	25.00	30.00			
6	12.50	17.50	12	27.50	32.50			
7	15.00	20.00	13	30.00	35.00			



RoHS Compliant

F				DRAWN:	GENERAL TOLERANCE:		DESCRIPTION: 2.5mm Wafer R/A Type	SIZE A4
E			Ken	.X=±0.20 .XX=±0.15				
D			CHECKED:	UNIT: MM				
C			Lily Chou	SCALE: 1:1				
B			APPROVAL:	SHEET: 1 / 1	PART NO:	WFRM25-XX		
A	01-SEP-2017	(PC0001)	Ken	Chao Peng	PROJECTION:			
REV	DATE	FILE	BY					