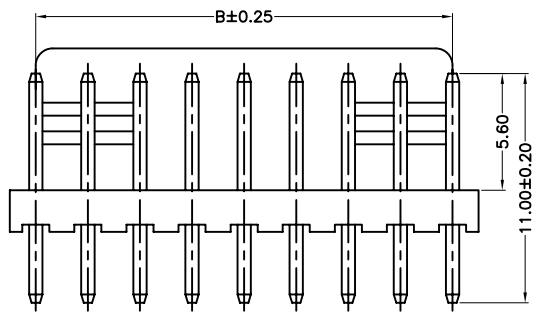
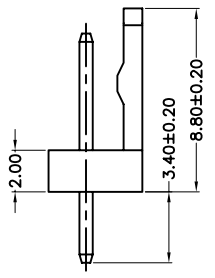


02~05 Pin



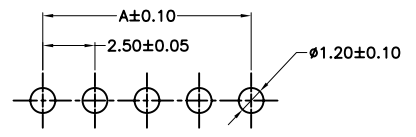
06~12 Pin



Circuits	Dim.A	Dim.B	Dim.C	Circuits	Dim.A	Dim.B	Dim.C
2	2.50	2.50	5.00	8	17.50	17.50	20.00
3	5.00	5.00	7.50	9	20.00	20.00	22.50
4	7.50	7.50	10.00	10	22.50	22.50	25.00
5	10.00	10.00	12.50	11	25.00	25.00	27.00
6	12.50	12.50	15.00	12	27.50	27.50	30.00
7	15.00	15.00	17.50				

Specifications:

Current Rating:3.0A AC/DC
 Voltage Rating:250V AC/DC
 Contact Resistance:20m Ohm Max
 Insulation Resistance:1000M Ohm Min.
 Withstanding Voltage:1000V AC/Minute
 Operating Temperature Range:-40°C To +105°C
 Material and Finish:
 Insulator:Nylon 66 (UL94V-0)
 Insulator Color:White
 Contact:Brass
 Plating:Tin Plated
 How To Order
 WFV25-XX



PCB Layout

RoHS Compliant

F			
E			
D			
C			
B			
A	22-May-2014	(PC0001)	Ken
REV	DATE	FILE	BY

DRAWN: Ken
 CHECKED: Lily Chou
 APPROVAL: Chao Peng

GENERAL TOLERANCE:
 .X=±0.20
 .XX=±0.15
 UNIT: MM
 SCALE: 1:1
 SHEET: 1 / 1
 PROJECTION:



DESCRIPTION: 2.5mm Wafer Straight Dip Type
 PART NO: WFV25-XX

SIZE
A4