

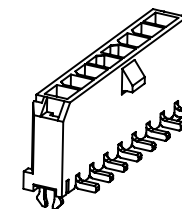
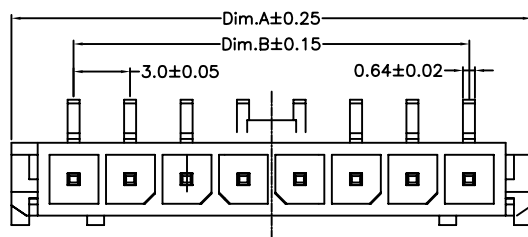
1

2

3

4

5



Specifications:
 Current rating:5.0Amps
 Voltage rating:250V AC,DC
 Contact resistance:10mohm Max
 Insulation resistance:1,000Mohm min.
 Withstanding voltage:1,500V AC;DC
 Operating Temperature range:-25°C ~ +105°C
 Materials:

Insulator:High Temp.Plastic(Nylon 46 UL94V-0)

Color:Black

Contact:Copper Alloy

Plating:Tin Plated

How to order

WFVASM30-XXT-CR

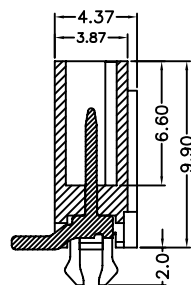
CR:Cap&Tape&Reel

T:Tin Plated

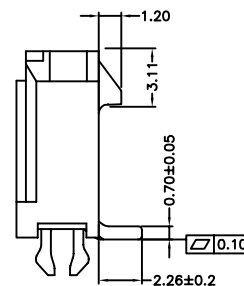
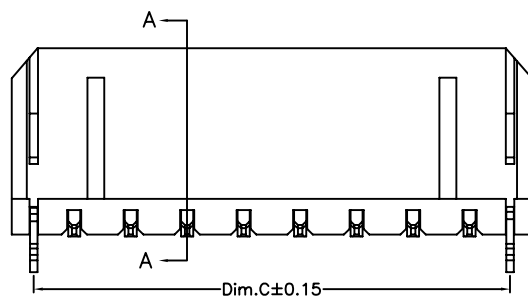
No.of Positions

SMD Type

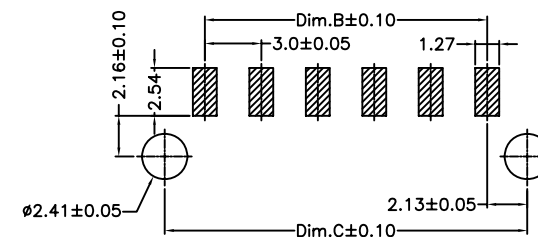
VA:Straight Single row



Section:A-A



Positions	Dimension			Positions	Dimension		
	A	B	C		A	B	C
2	9.65	3.00	7.30	8	27.65	21.00	25.30
3	12.65	6.00	10.30	9	30.65	24.00	28.30
4	15.65	9.00	13.30	10	33.65	27.00	31.30
5	18.65	12.00	16.30	11	36.65	30.00	34.30
6	21.65	15.00	19.30	12	39.65	33.00	37.30
7	24.65	18.00	22.30				



PCB LAYOUT

RoHS Compliant

F				
E				
D				
C				
B				
A	01-SEP-2009	(PC0001)	Ken	
REV	DATE	FILE	BY	

DRAWN:
Ken
CHECKED:
Lily Chou
APPROVAL:
Chao Peng

GENERAL TOLERANCE:
.X=±0.20
.XX=±0.15

UNIT: MM

SCALE: 1:1

SHEET: 1 / 2

PROJECTION:



HOYATO
Connector supplies

DESCRIPTION:

3.0mm Wafer Single Row SMT Type

PART NO:

WFVASM30-XXT

SIZE

A4