

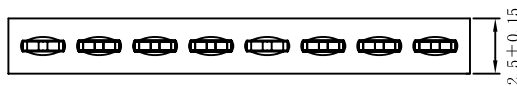
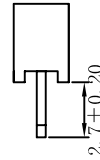
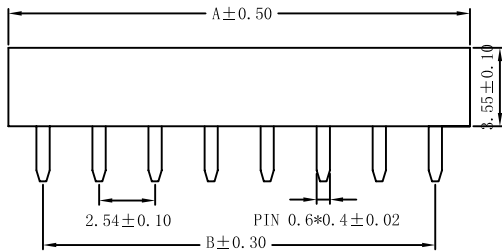
1

2

3

4

5



Specifications:

Current rating: 3.0A AC, DC

Voltage rating: 250V AC, DC

Contact resistance: 20m ohm max.

Insulation resistance: 1,000M ohm min.

Withstanding voltage: 600V AC/minute

Operating temperature range: -40°C to +105°C

Material:

Insulator: High Temp. Plastic (Nylon 46 UL94V-0)

Standard Color: Black

Contact: Copper Alloy

Finish: Gold Plated

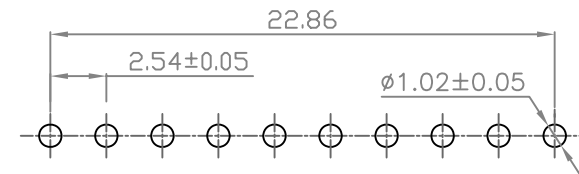
How To Order

PSV254-XXG-36

Plastic Height 3.6mm
Gold Plated
No. Of Contact
V: Straight Type

Dimension :

Poles	DIM:(mm)		Poles	DIM:(mm)		Poles	DIM:(mm)		Poles	DIM:(mm)	
	A	B		A	B		A	B		A	B
2	5.08	2.54	12	30.48	27.94	22	55.88	53.34	32	81.28	78.74
3	7.62	5.08	13	33.02	30.48	23	58.42	55.88	33	83.82	81.28
4	10.16	7.62	14	35.56	33.02	24	60.96	58.42	34	86.36	83.82
5	12.70	10.16	15	38.10	35.56	25	63.50	60.96	35	88.90	86.36
6	15.24	12.70	16	40.64	38.10	26	66.04	63.50	36	91.44	88.90
7	17.78	15.24	17	43.18	40.64	27	68.58	66.04	37	93.98	91.44
8	20.32	17.78	18	45.72	43.18	28	71.12	68.58	38	96.52	93.98
9	22.86	20.32	19	48.26	45.72	29	73.66	71.12	39	99.06	96.52
10	25.40	22.86	20	50.80	48.26	30	76.20	73.66	40	101.6	99.06
11	27.94	25.40	21	53.34	50.80	31	78.74	76.20			



P.C.B. LAYOUT

RoHS Compliant

F				DRAWN:	GENERAL TOLERANCE:			DESCRIPTION: 2.54mm PCB Socket Single Row Straight Type	SIZE A4
E				Ken	.X=±0.20 .XX=±0.15				
D				CHECKED:	UNIT: MM	PART NO: PSV254-XXG-36		A4	
C				Lily Chou	SCALE: 1:1				
B				APPROVAL:	SHEET: 1 / 1	PROJECTION:		A4	
A	01-SEP-2009	(PC0001)	Ken	Chao Peng					
REV	DATE	FILE	BY						